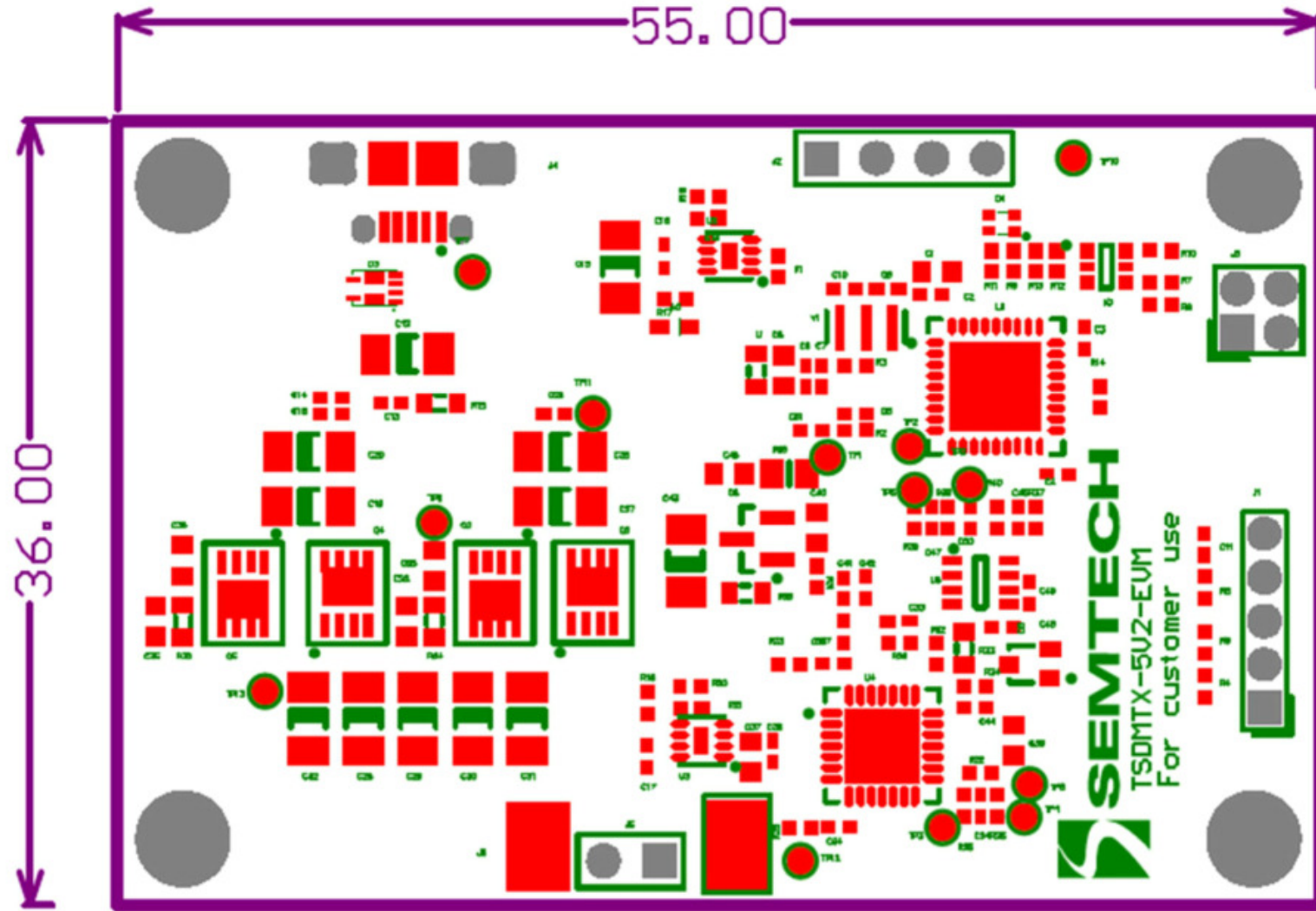


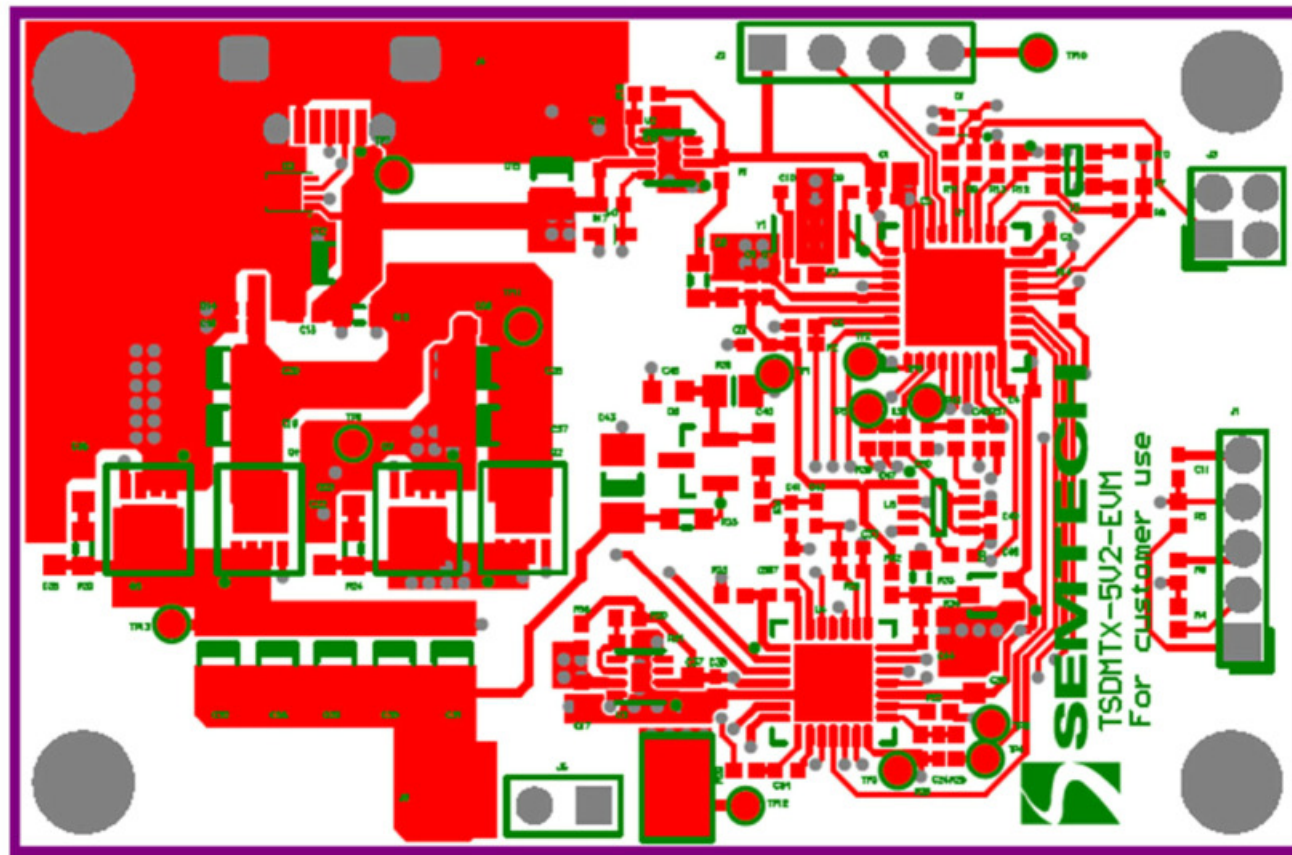
# TX5W layout



# TX5W layout

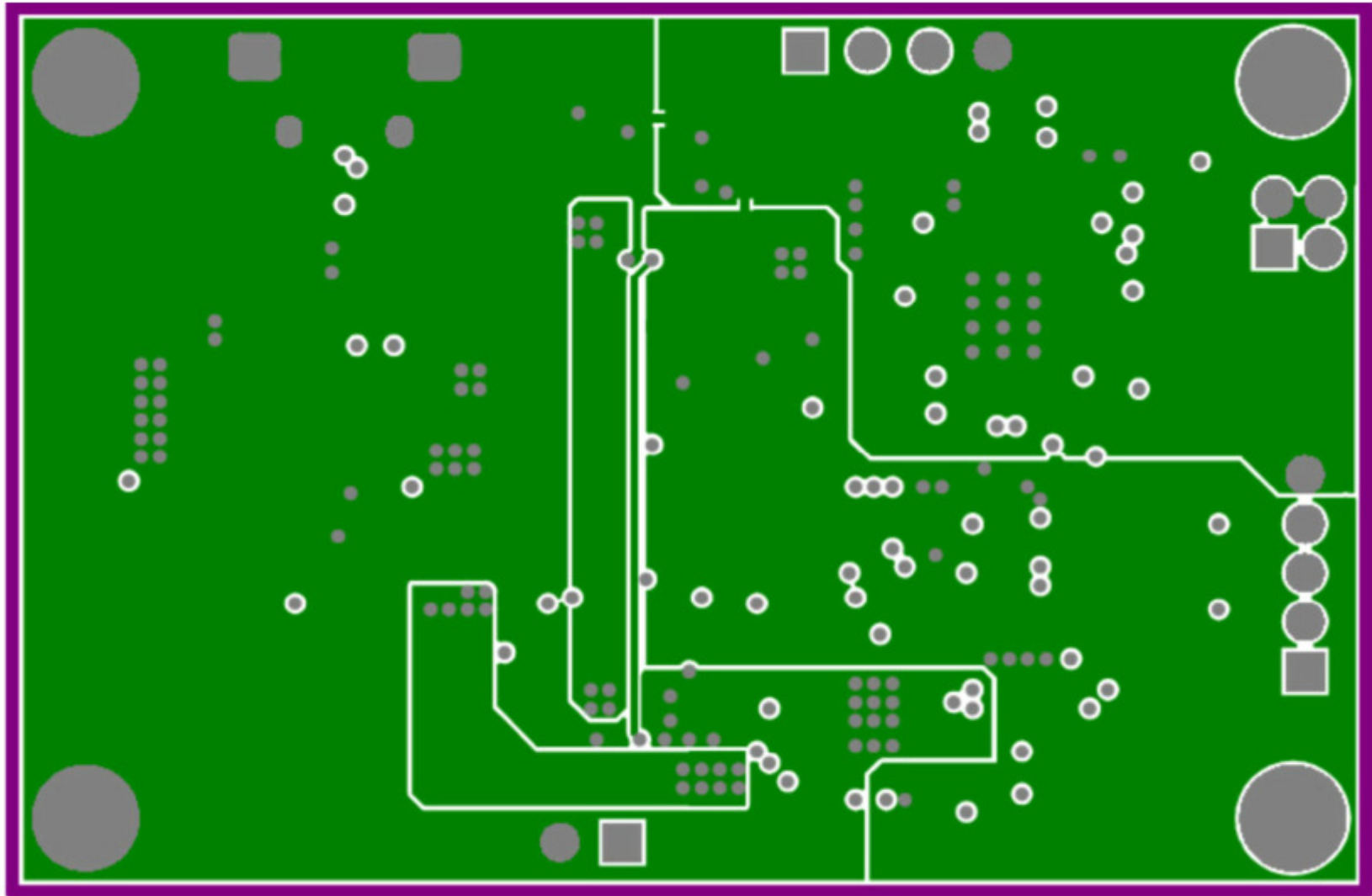
## E. Board Layers

The TSDMTX-5V2-EVM PCB is based on a four layer design as shown below. The ground plane in layer two is recommended to reduce noise and signal crosstalk. The EVM placed all components on the top of the board for easier evaluation of the system. End product versions of this design can be made significantly smaller by distributing components on both sides of the board. The Gerber files for this artwork can be downloaded from the Semtech web page.



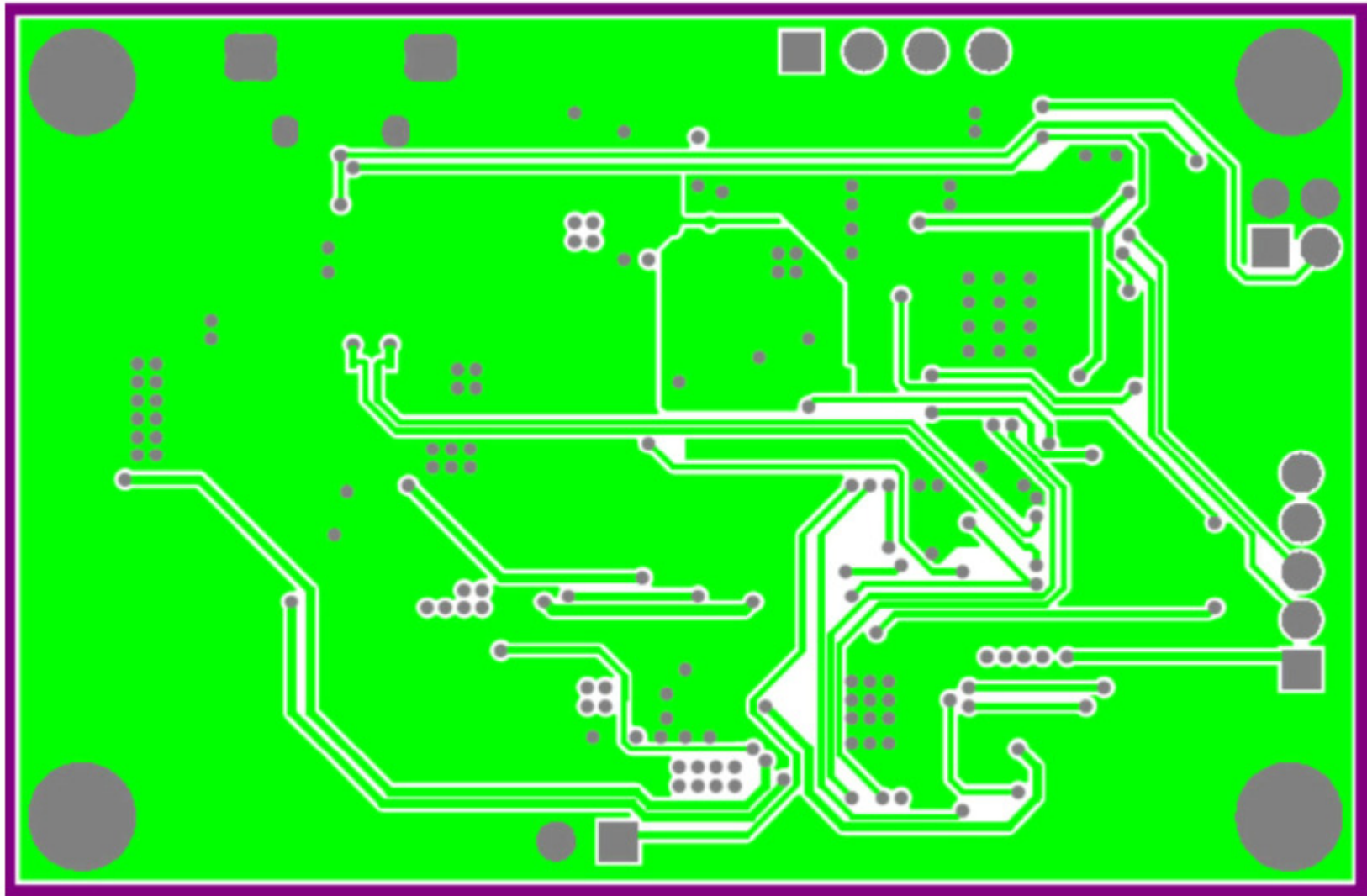
Top Layer

## TX5W layout



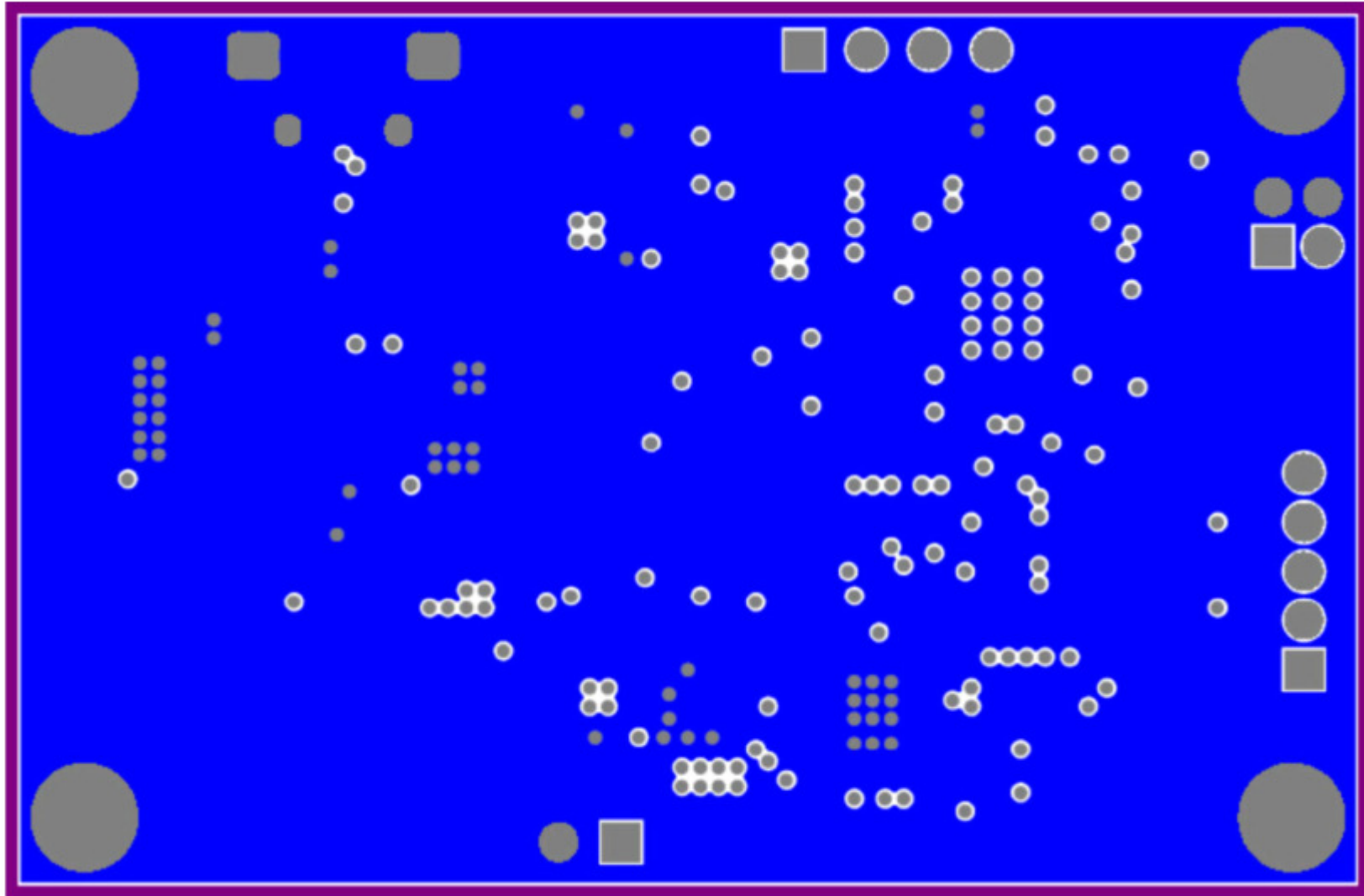
Ground Plane

## TX5W layout



Signal Layer

## TX5W layout

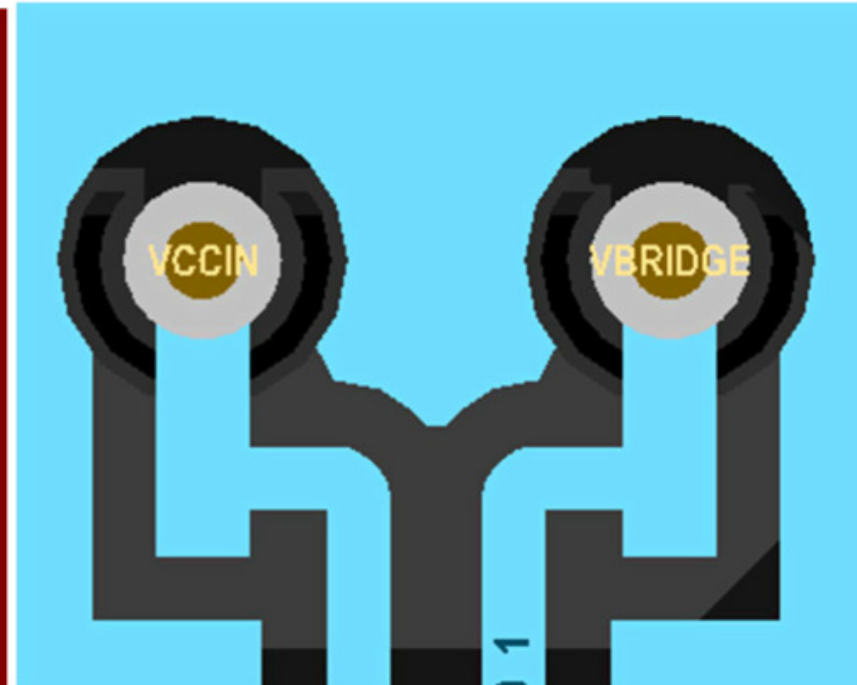
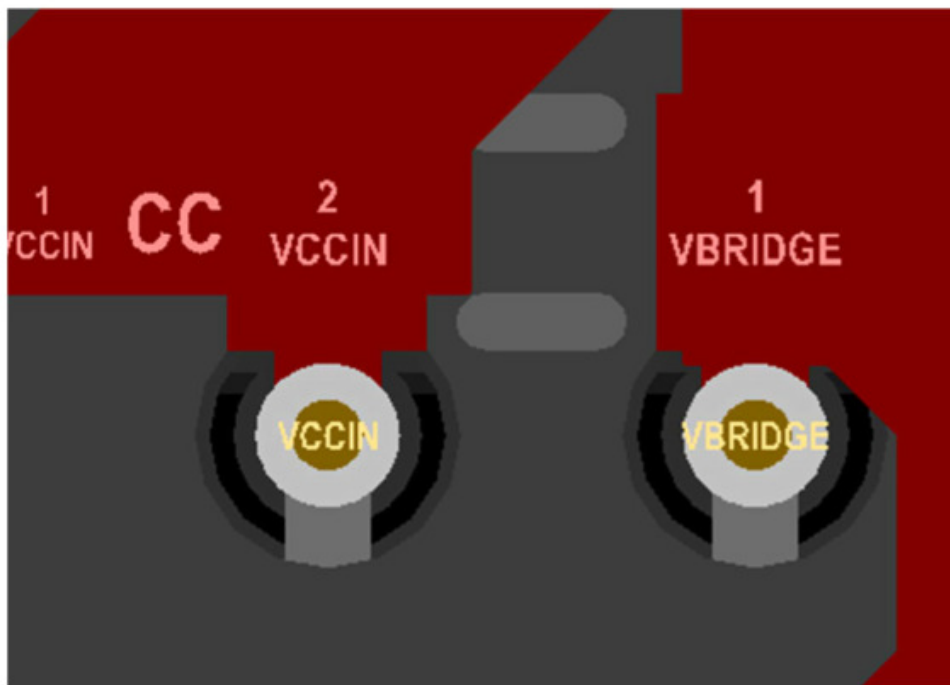


Bottom Layer

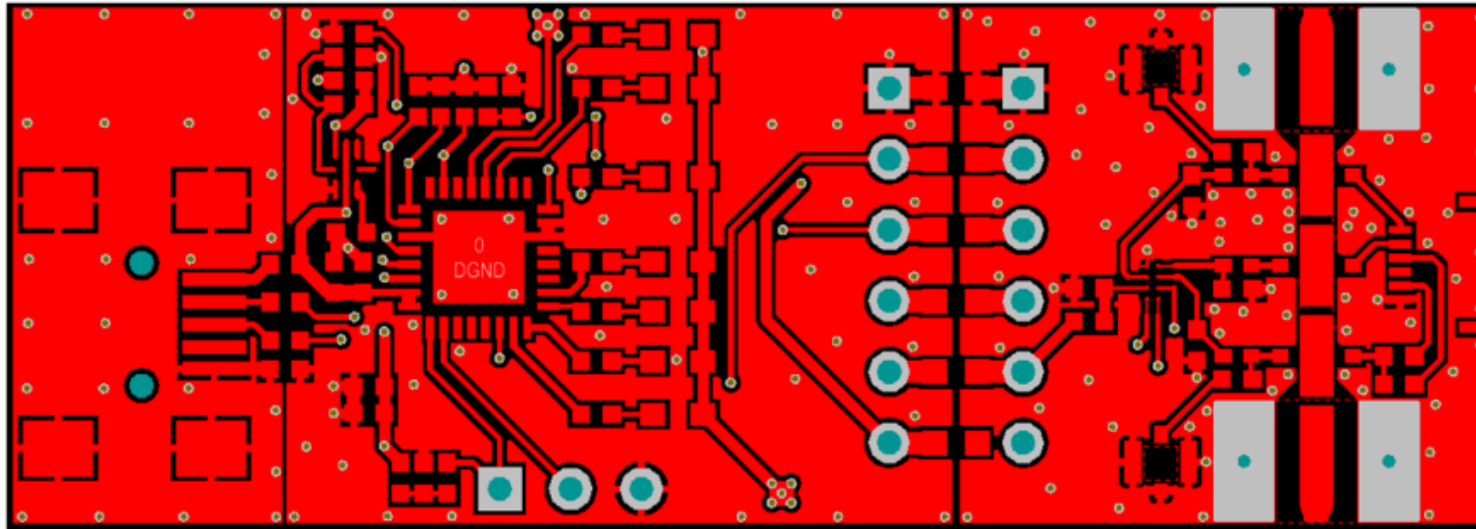
# TX5W layout

## Attention:

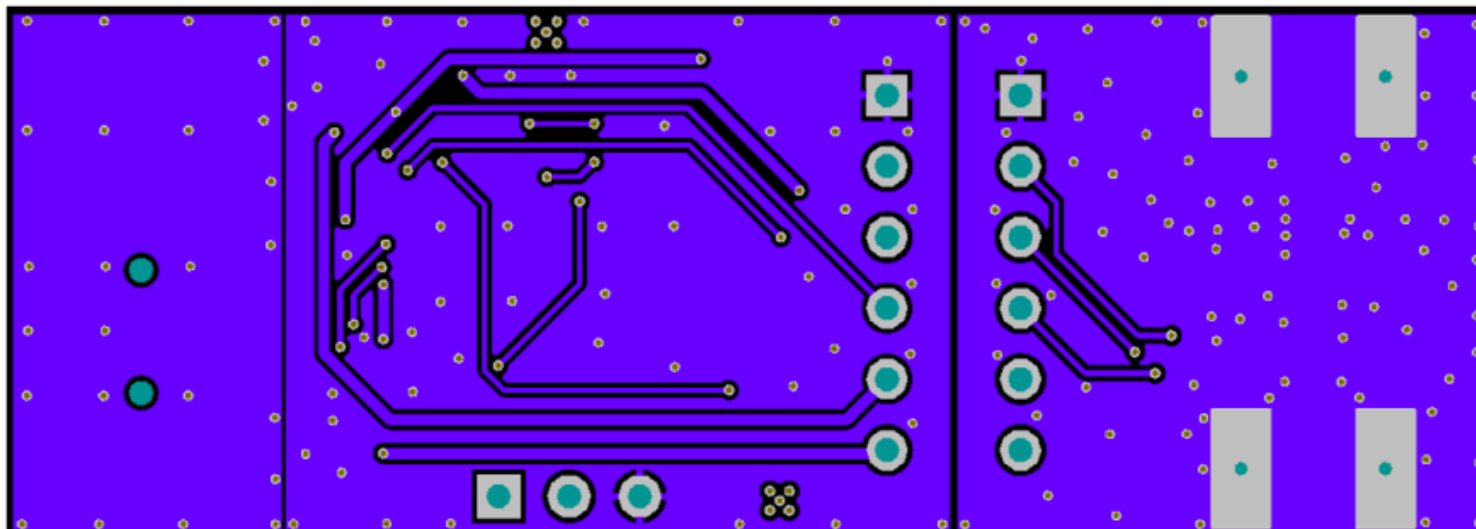
Connect the current-sense amplifier using Kelvin connections directly to the resistor pads, and DO NOT allow high current to flow through the Kelvin connections. It is a example for the layout.



# SX9324 layout



Top Layer



Bottom Layer