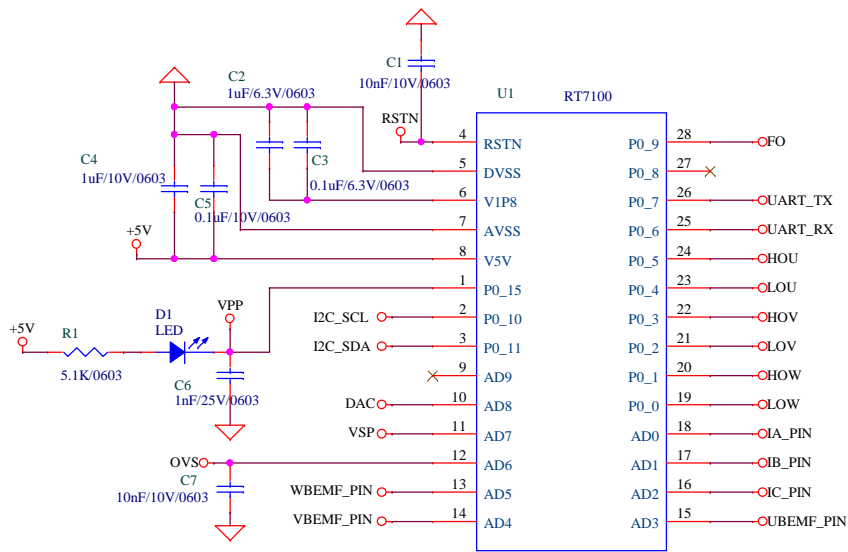
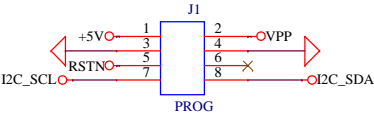


Controller

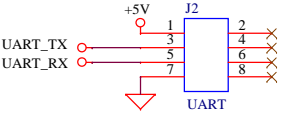
RT7100



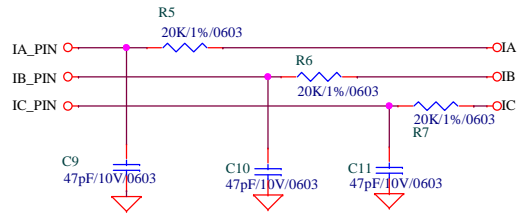
Programming Port



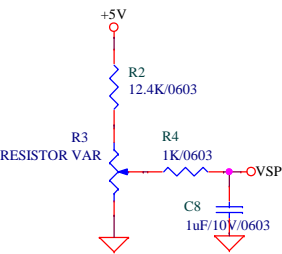
Tuning Port



Current Sensing



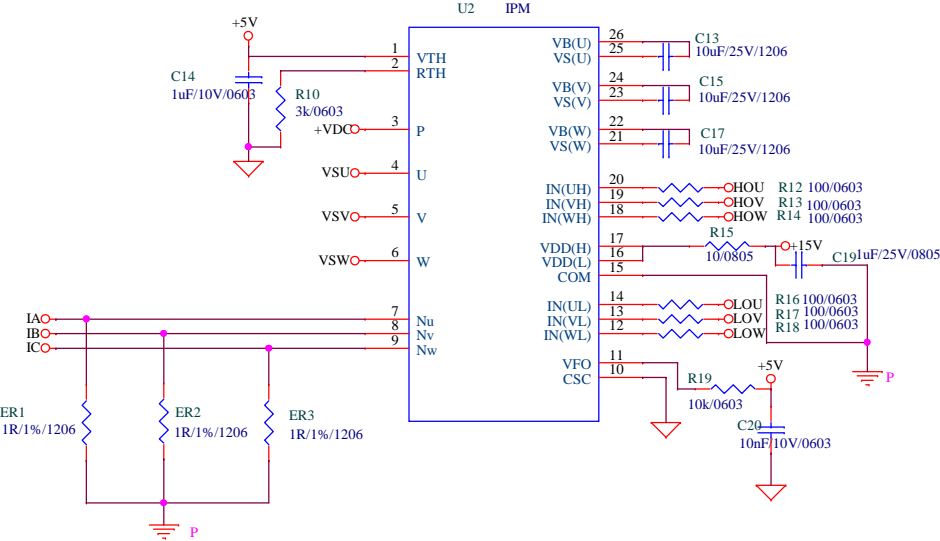
VSP



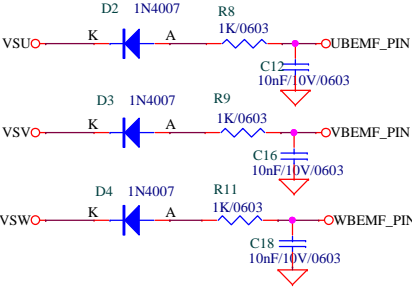
Title					Richtek RT7100 with IPM Evb ver1.0					
Size B		Document Number					Rev 1.0			
Date:		Thursday, April 20, 2017			Sheet		1		of 3	

Driver

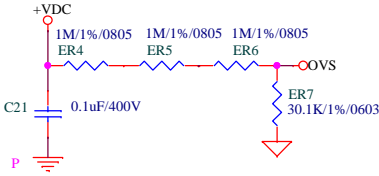
IPM



BEMF Sensing

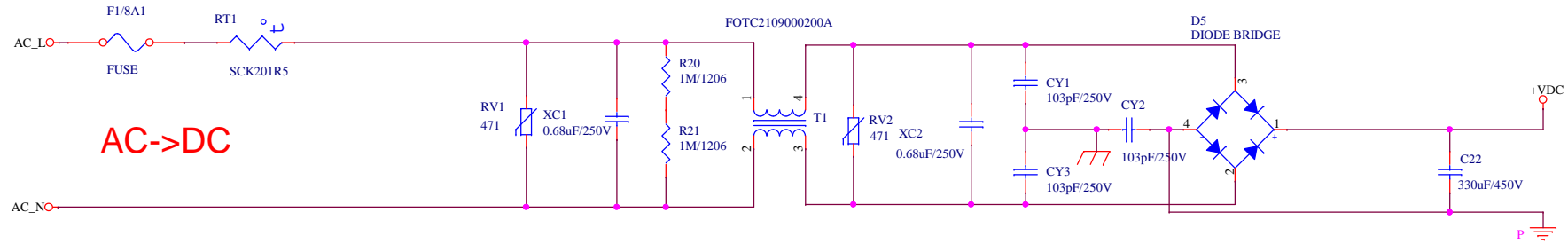


VDC Sensing

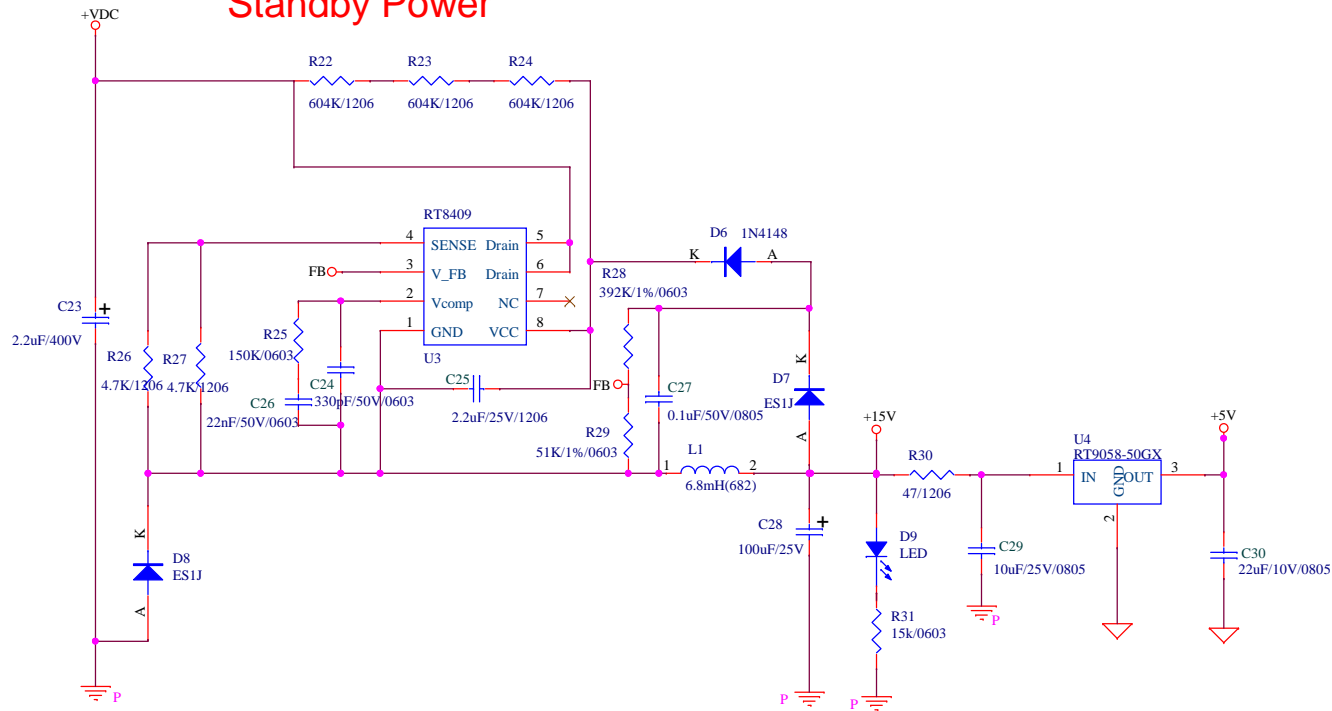


Title					Richtek RT7100 with IPM Evb ver1.0				
Size	B	Document Number				Rev			
						1.0			
Date:		Thursday, April 20, 2017			Sheet	2	of	3	

Power



Standby Power



Connection Point



Title		
Richtek RT7100 with IPM Evb ver1.0		
Size	Document Number	Rev
B		1.0
Date:	Thursday, April 20, 2017	Sheet 3 of 3